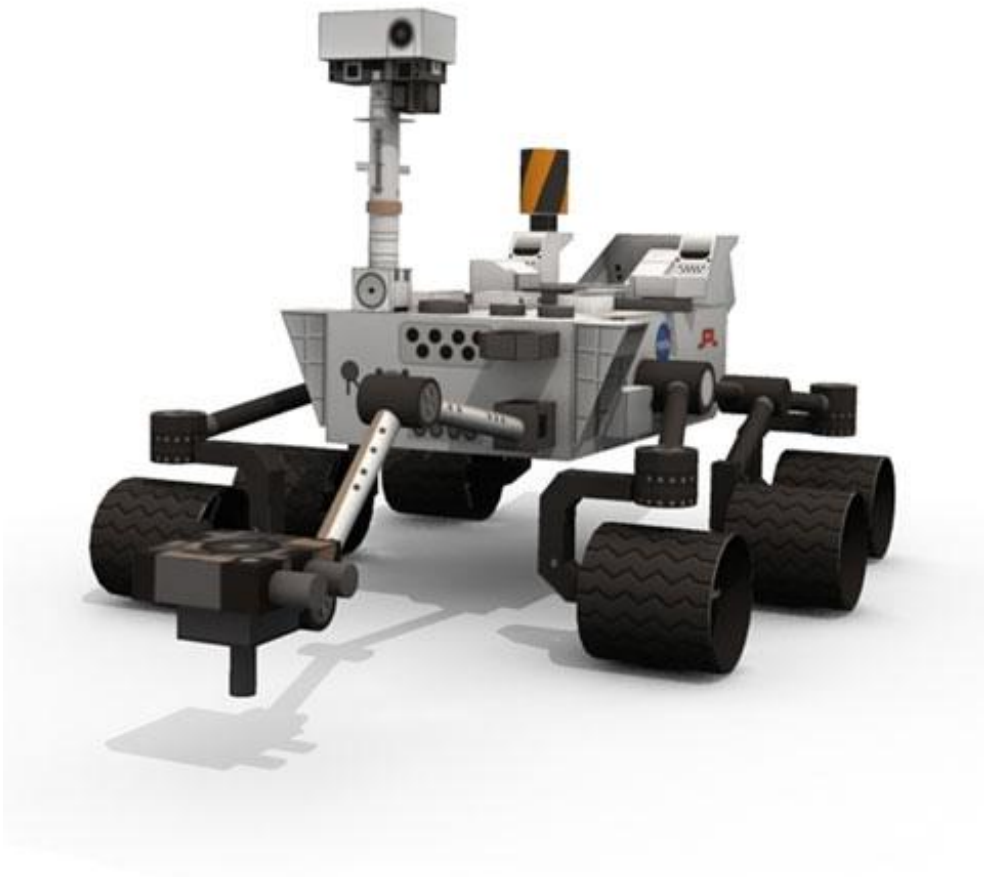


LEGEND

- Glue
- * Cutout - make a hole



Model : No. 0232/III/10



Mars Rover - Curiosity

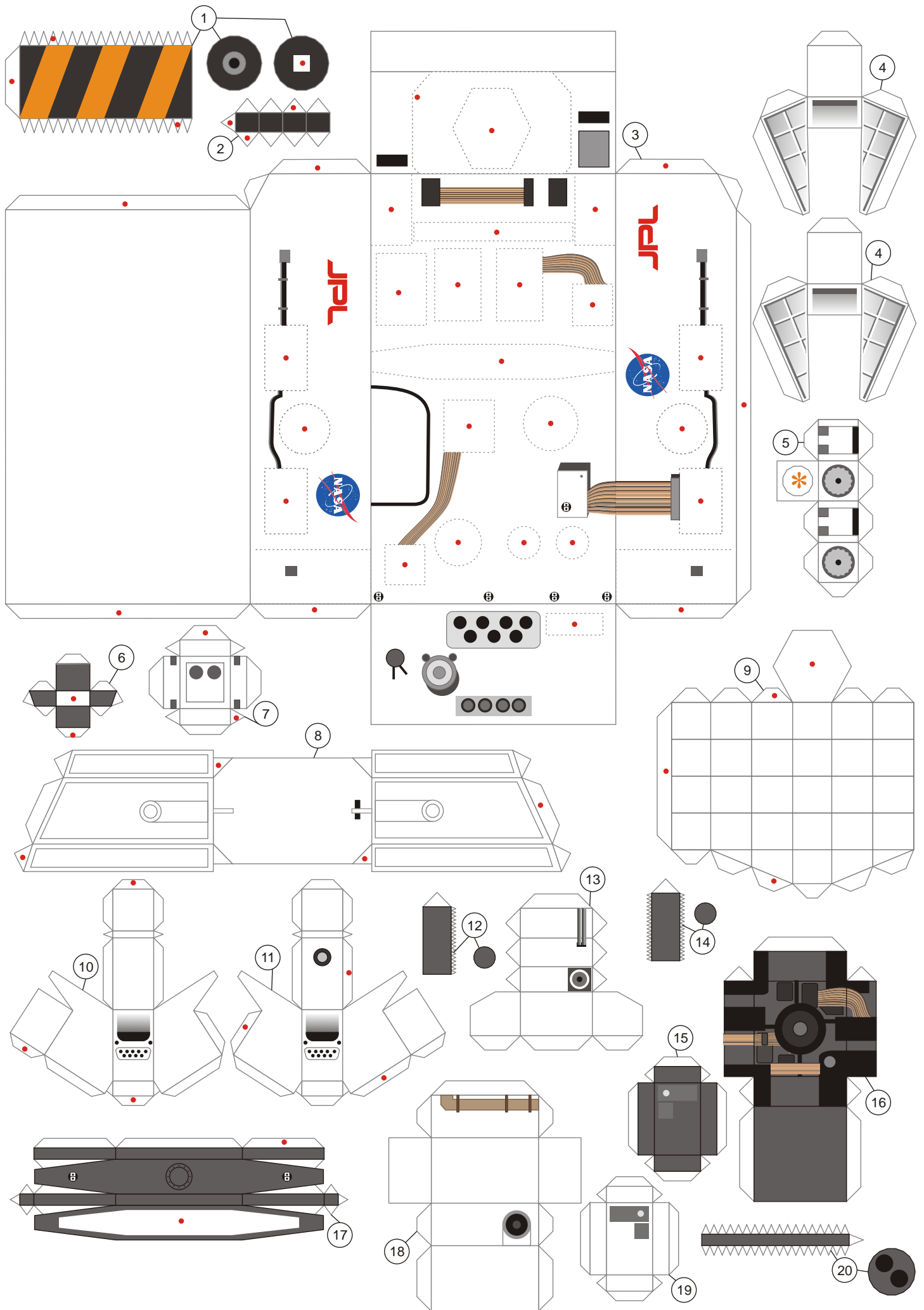
Scale 1:20

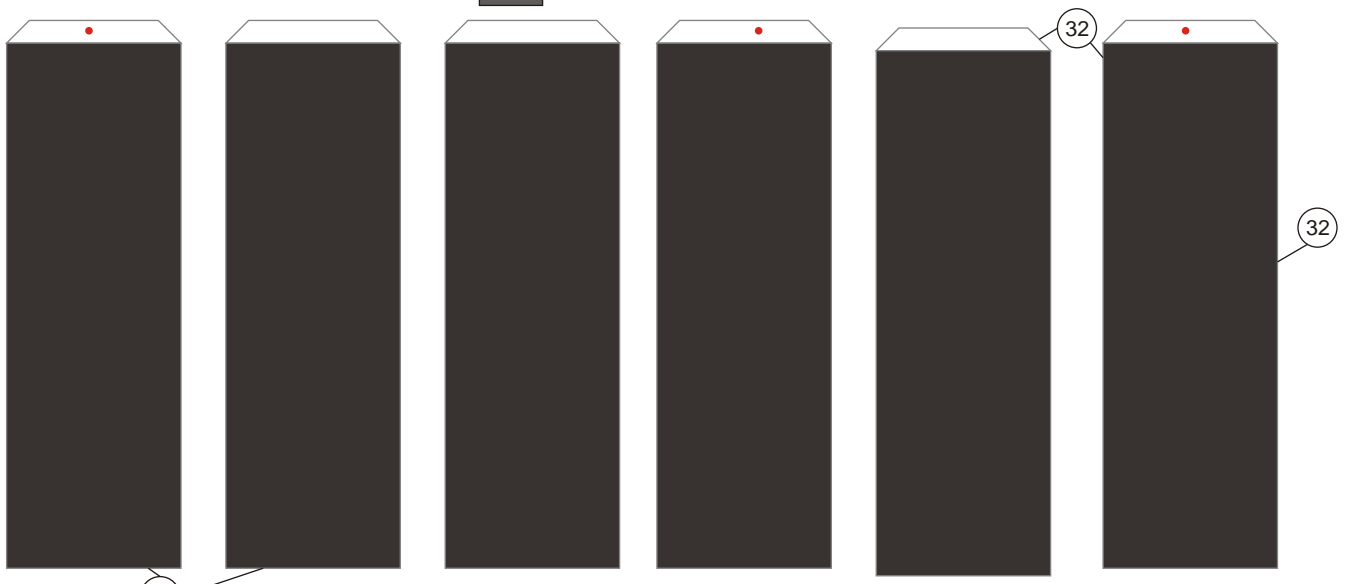
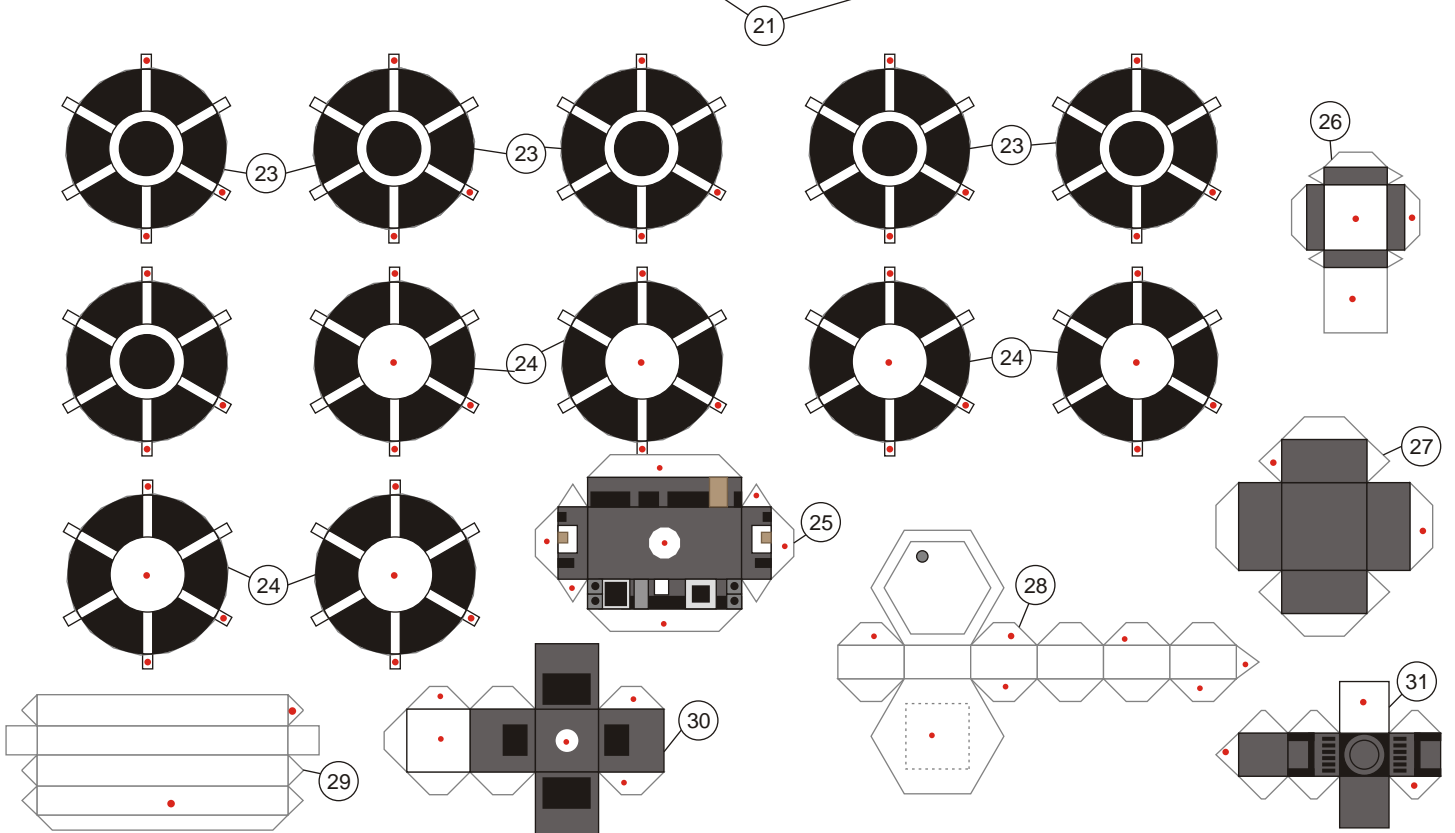
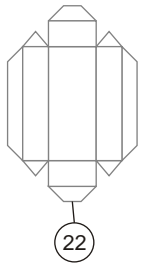
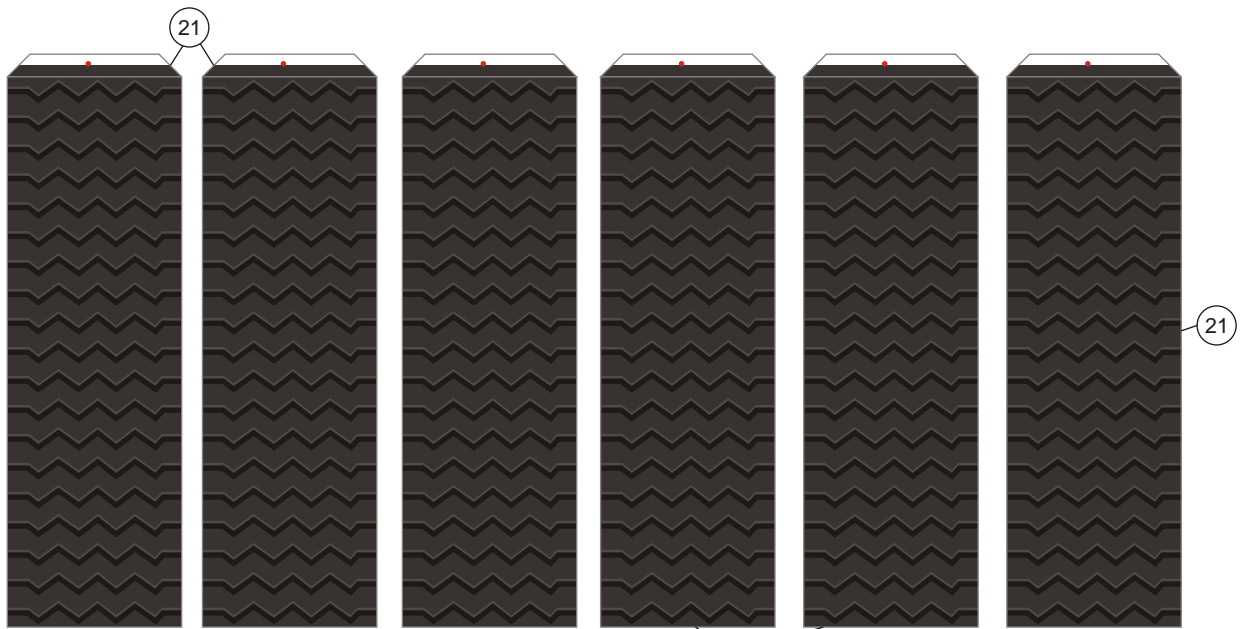
This model is another addition for space related paper model. This is the latest Mars exploration rover, it is named Curiosity. Curiosity carried out Mars Science Laboratory (MSL) mission on Mars surface. MSL was launched using Atlas V541 on 26 November 2011, it expected to land on Mars between 6 to 20 August 2012. Curiosity will search further for scientific rock and soil and micro organism sample if exist in mars. This paper model is not very accurate, I can't find a detail blueprint for this rover, so I have to figure out on how it looks in 3d by looking at NASA video and photos as references. I made a roughly 1:20 scale on this model, the real one is 3 meters in length. The template only contains 3 pages, I recommend to use 120-160 gsm paper. With this release I also made a new category which is space.

Assembly Instructions - [click here](#)

Petunjuk Perakitan

Designed by Julius Perdana - 2011





32

